

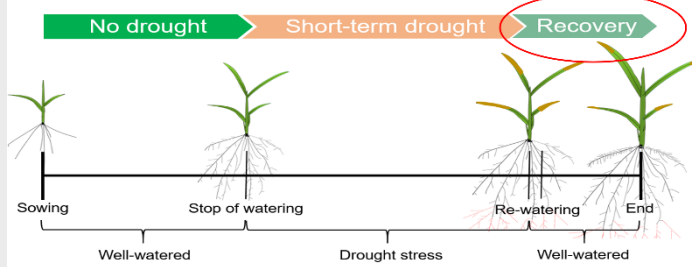
Recovery after drought in rice: Root regrowth and P uptake

Congcong Zheng from Root group

Supervisors: Johannes Postma; Tobias Wojciechowski; Josefine Kant; Matthias Wissuwa; Silvia D Schrey; Michelle Watt; Mathias Becker

Question

Upland rice recovery rate related to P uptake?

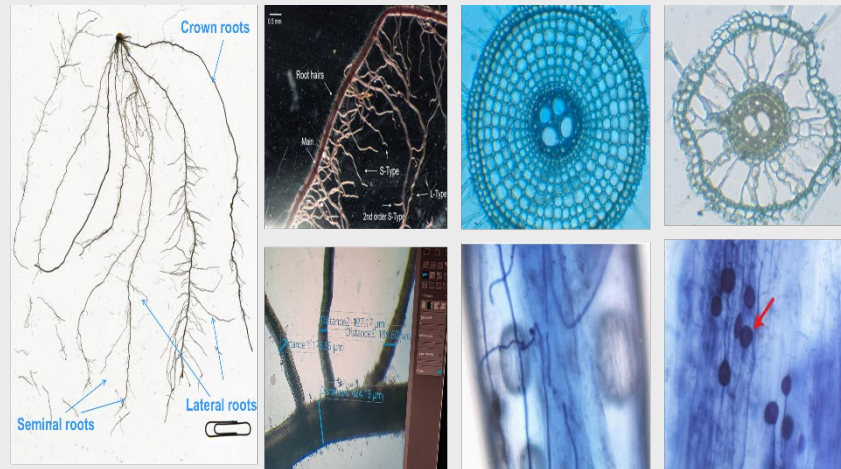


Materials and Methods



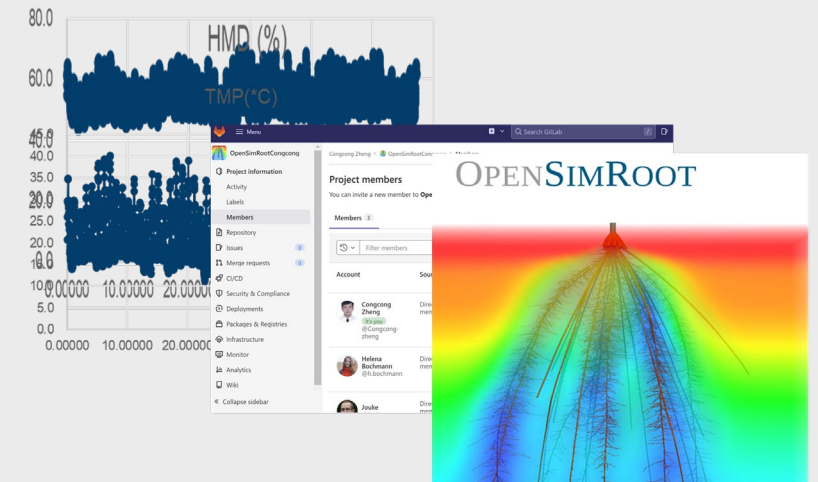
A three-factorial with 2 P levels, 2 water treatments, and 2 genotypes.

Wet experiment



➤ Parameters: leaf, stem and root dry biomass, growth rate, leaf area, root morphology and anatomy traits, AMF colonization, phosphorus concentration, weather station data, and soil data.

Dry experiment



➤ OpenSimRoot Simulation: Parameterize and develop the OpenSimRoot model with obtained data to simulate P uptake and drought recovery.