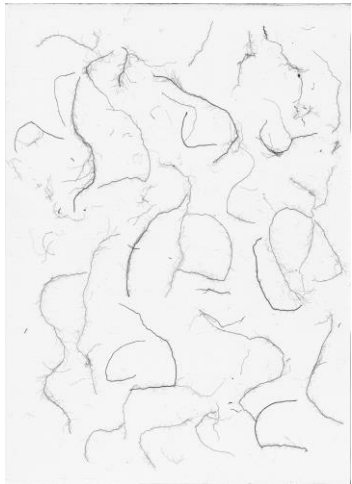


# The role of rice root diameter under drought

Helena Bochmann, Uwe Rascher, Amelia Henry (IRRI), Josefine Kant, Johannes Postma

## How do root system architecture and morphology influence water uptake?

- Two rice lines with contrasting root architecture were used for a drought study.
- The SWaP (Soil Water Profiler) was used to reveal the drying of the soil core.
- The thin-rooted line dried out the soil faster than the thick-rooted line.



SWaP (Van Dusschoten *et al.*, 2020)