

University of Twente
P.O. box 217
7500 AE Enschede

Drienerlolaan 5
7522 NB Enschede

T +31 (0)53 489 4471
E oraties@utwente.nl

www.utwente.nl/oraties

HOW TO REACH THE UNIVERSITY OF TWENTE?

BY CAR

From the A1 motorway, take the A35 motorway towards Enschede. Then take exit no.26 Enschede-West/Universiteit. Follow the signs Universiteit. If you use a navigation system, navigate to Drienerlolaan 5 in Enschede, Netherlands.
For detailed information about building locations, please download the campusmap (www.utwente.nl/contact).

BY TRAIN

Take a train to Hengelo, Enschede or Enschede Drienerlo.
After that, follow the bus instructions below.

BY BUS

From Enschede railway station

take either bus 1 to Universiteit
or bus 9 to Hengelo

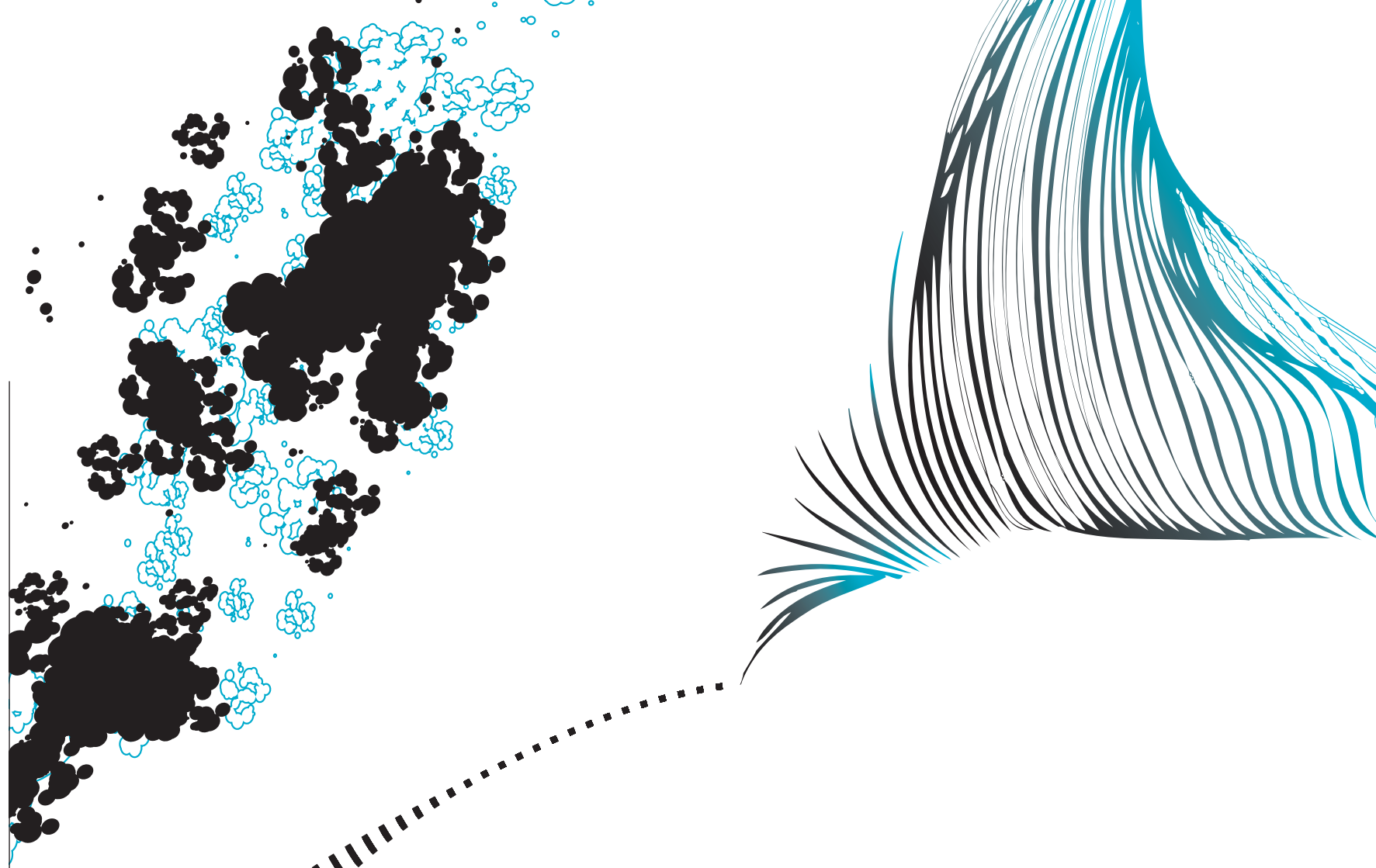
From Enschede Drienerlo railway station

take bus 1 to Universiteit.

From Hengelo railway station

take either bus 15 to Universiteit or
bus 9 to Enschede

(buses 17, 18, and 19 also pass the University).



CERAMIC ION CONDUCTING MEMBRANES FOR A SUSTAINABLE EUROPEAN ENERGY SYSTEM

REGISTRATION

Would you like to attend the ceremony?
Register before June 1st, 2017 on
www.utwente.nl/inaugurallectures



The Rector Magnificus would like to announce that Prof.Dr. Wilhelm A. Meulenbergh appointed by the Executive Board of the University of Twente as Professor of Ion Transport Membranes at the Faculty of Science and Technology, will be giving an inaugural lecture in the Prof.Ir. M.P. Breedveld Room, Waaier Building, at 16:00 hours on Thursday June 1st, 2017 to mark the occasion of his appointment.

The title of this lecture will be:

Ceramic ion conducting membranes for a sustainable European energy system

The Rector Magnificus kindly invites you to attend this event. Before the inaugural lecture coffee and tea will be served in the foyer of the Waaier building.

You may offer your congratulations after the lecture.

INVITATION INAUGURAL LECTURE
June 1st, 2017

PROF.DR.
WILHELM A.
MEULENBERG

UNIVERSITY OF TWENTE.