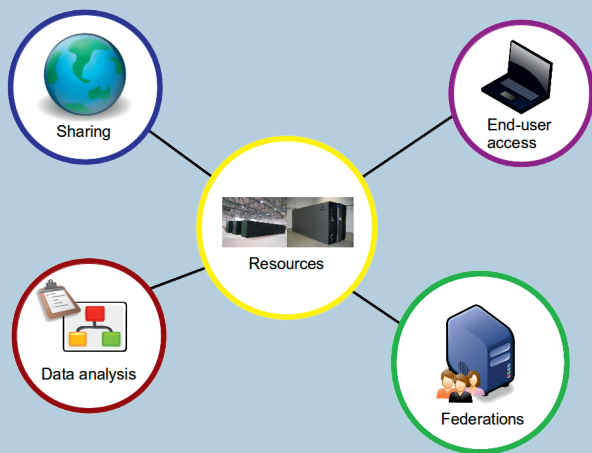


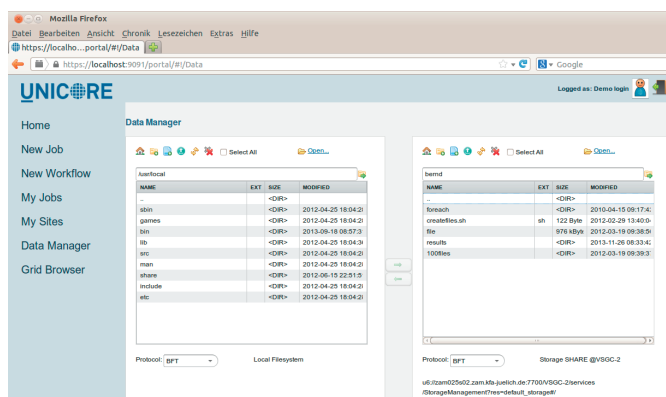
Easy Access to Federated Resources



- UNICORE evolution and development
- Easy access to resources via Web portal, end-user clients and APIs
- Federated identity management
- High-volume, high-throughput data transfer
- Enable higher-level functionalities
- High-performance Computing (HPC) oriented, compliant with HPC centre policies

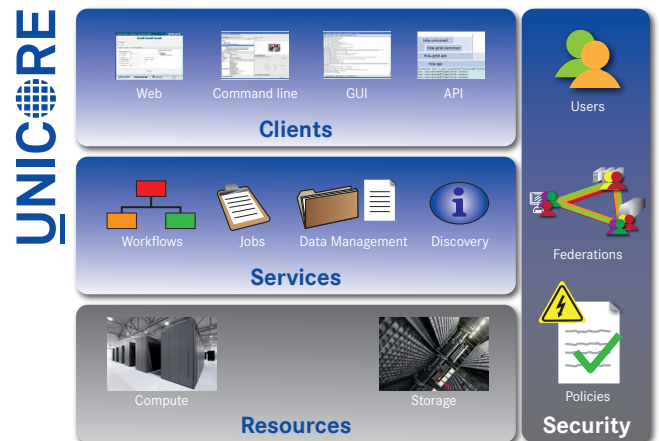
UNICORE Web Portal

- Application oriented
- Extensive data management features (upload/download, sharing, metadata, ...)
- Flexible user authentication and registration options
- Social features, resource sharing
- Easily extensible and highly configurable







Enable Higher-level Functionalities

- Scientific workflows
- Metadata functionalities (automated extraction, indexing, harvesting)
- Multi-site resource reservation
- Simple resource sharing
- Interactive supercomputing



Federated Identity Management

- Based on a new solution: 
- Integration with SAML federations (e.g. EduGAIN)
- Flexible, highly extensible solution
- Collaboration within   

High-volume, High-throughput Data Transfer

- Firewall-friendly high-performance protocol: UFTP
- Server/server, client/server
- Advanced features (rsync, encryption, compression)
- Integrated with Web Portal and Authentication & Authorization Infrastructure (AAI)
- Lightweight, standalone client